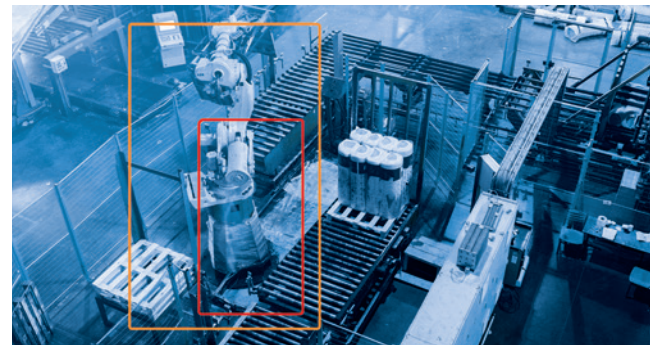


FireCatcher®

With Axis P1375E Network fixed camera



**Video smoke and flame detection
for critical environments**

Software loaded on AXIS camera P1375E
To provide fire and smoke detection Analytics

Protect your facility with a camera that warns you of smoke and flames

As a safety professional, you want to protect your business facility or infrastructure as much as possible. By adding the intelligent FireCatcher software to your Axis camera, you can enhance your fire safety by allowing it to visually recognize fire outbreaks in the earliest stage. FireCatcher detects smoke or flames and integrates seamlessly with your fire alarm control panel and video surveillance system to generate an early warning. Visual verification in the camera image allows you to assess the danger and react fast. FireCatcher is your best guarantee to be ahead of the fire and to prevent worse from happening.

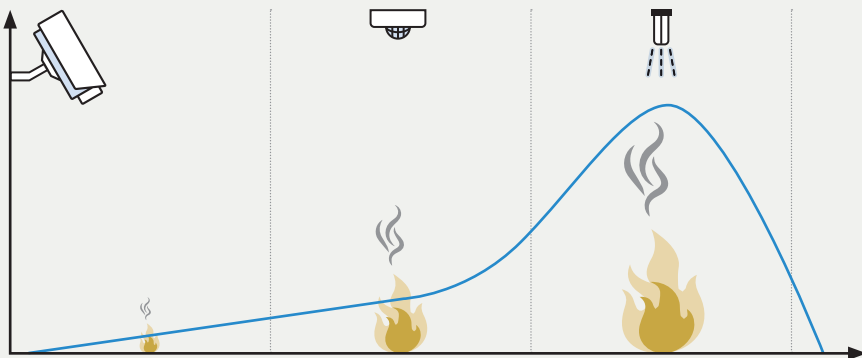


With a robust design, AXIS P1375-E Network Camera offers excellent video for outdoor scenes. It handles temperatures between -40°C to 60°C (-40°F to 140°F) and delivers details even in challenging light conditions or low-light, with Forensic WDR and Lightfinder 2.0. For pitch darkness, an optional IR kit is available. Enhanced security features such as signed firmware and secure boot ensure the integrity and authenticity of the camera's firmware



Intelligent fire detection

FireCatcher software delivers excellent smoke and flame detection. The software is designed for selected Axis cameras, with the FireCatcher analytics taking place within the camera, on the edge of the network. This allows for faster detection and decision-making without needlessly burdening the network. FireCatcher is a field-proven smoke and flame detection application, and based on previously CNPP and BOSEC-certified detection solutions.



Early fire detection

Traditional fire detectors need to make direct contact with heat or smoke to be activated. But by the time that happens, it can already be too late. Araani's FireCatcher software does not wait for this, but immediately sees starting fires at the source. This saves valuable time, which allows you to intervene much quicker and prevent fire damage from spreading.