

Radiation tolerant camera
for high to medium neutron
and gamma radiation



Epsilon

Omega

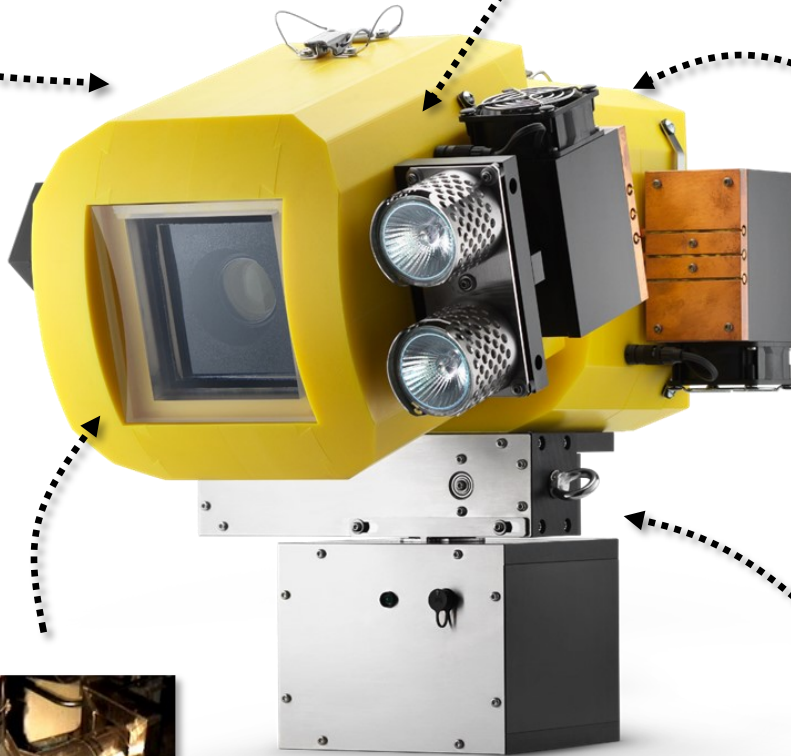
- Dynamic **high-quality color imaging** (670 TV Lines ~ 720x480 Pixels)
- Full sensor optimization and control** (Light Contrast, Gamma & Color balance ...)
- 0.01° positioning** accuracy
- 360° pan** and **180° tilt**
- True x28 optical zoom**
- Variable PTZ speeds**
- Spot and flood halogen lamps**
- 0.7 LUX** light sensitivity
- High S/N ration** giving very low noise
- Optional audio** improves in containment analysis (Mechanical issues, vibrations, leaks...)



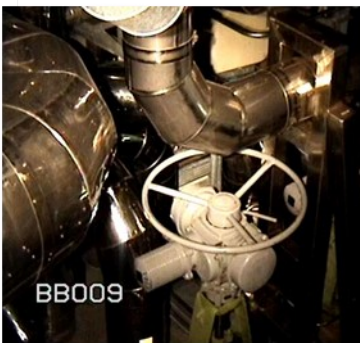
Unique Radiation Suppressing
Camera Body



Spot and Flood Halogen Lamps

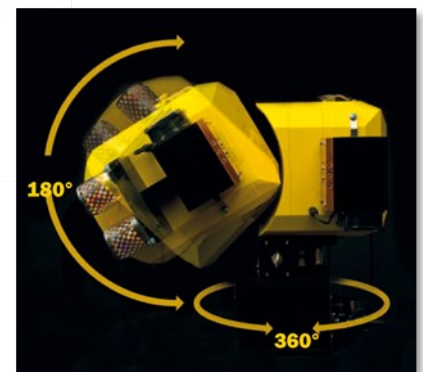


Twin Cooling System



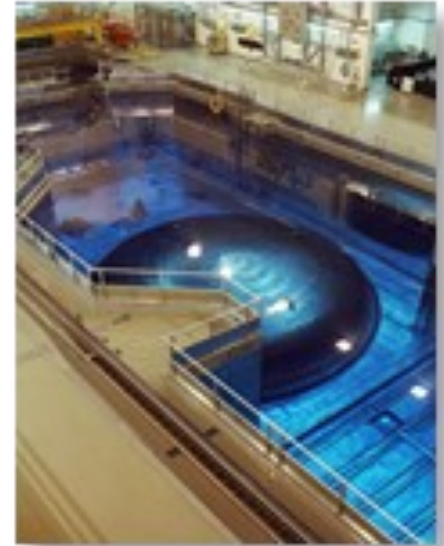
BB009

X28 Optical Zoom
Auto Focus
HQ Color Image



Variable Speed PTZ

| | |
|--------------------------|--|
| Camera module | <p>Sensor: ¼" day/night color sensor (670 TVL)</p> <p>Minimum lighting: 0.7 lux at F1.6, 1/50s and 50 IRE</p> <p>Optical zoom: 28x f=3.5mm (Wide) to f=98mm (Tele)</p> <p>Viewing horizontally: 55.8°-1.6° from wide to tele</p> <p>S/N ratio: 75 dB due to thermoelectric cooling</p> <p>Focus / Iris: Yes, auto and manual</p> |
| Physical features | <p>Pan / Tilt: ± 180°, .045° / ± 90°, .045° (Variable speed)</p> <p>Lamps: 2x 35W following the Pan/Tilt</p> <p>Size: H: 430mm L: 460mm W: 350mm</p> <p>Weight: 30 kg (58.4 Lb.)</p> <p>Power Supply: 230/110/100/24 VAC - 50/60 Hz</p> |
| Communication | <p>Video Output: BNC or Balanced 2-wire (1 VPP/75 or 120 Ω)</p> <p>Control Output: LonWorks or Pelco D (RS-422 / RS-485)</p> <p>Audio (optional): FM or Balanced 2-wire</p> |
| Environment | <p>IP class: IP 65 (Sensor Module)</p> <p>Operating Temp.: 5–65°C (40-150°F), max 90°C (195°F) for 8 h</p> <p>Humidity: 0 – 100% RH, non-condensing</p> <p>Vibration: 2 – 9 Hz 1.5mm, 9 – 200 Hz acc. 5m/s²</p> <p>Pressure: 5 Bar above normal atm. pressure</p> |
| Radiation | <p>Type of Protection: Neutron and Gamma Protection</p> <p>Dose Dose Rate (*): > 200,000 Rem 20,000 Rem\Hr</p> <p>Internal sensor: Internal radiation damage sensors</p> |



- Easy connection to existing video systems
- Use existing cables
- Minimum changes to existing hardware and documentation.



Power
(230/110/100/48/24 VAC)

Video Out 2
(balanced, 2-wire)
FM Audio
(balanced, 2-wire)
ISEC Protocol
(LonWorks, 2-wire)
Pelco D Protocols
(RS-422/485, 2&4 wire)

