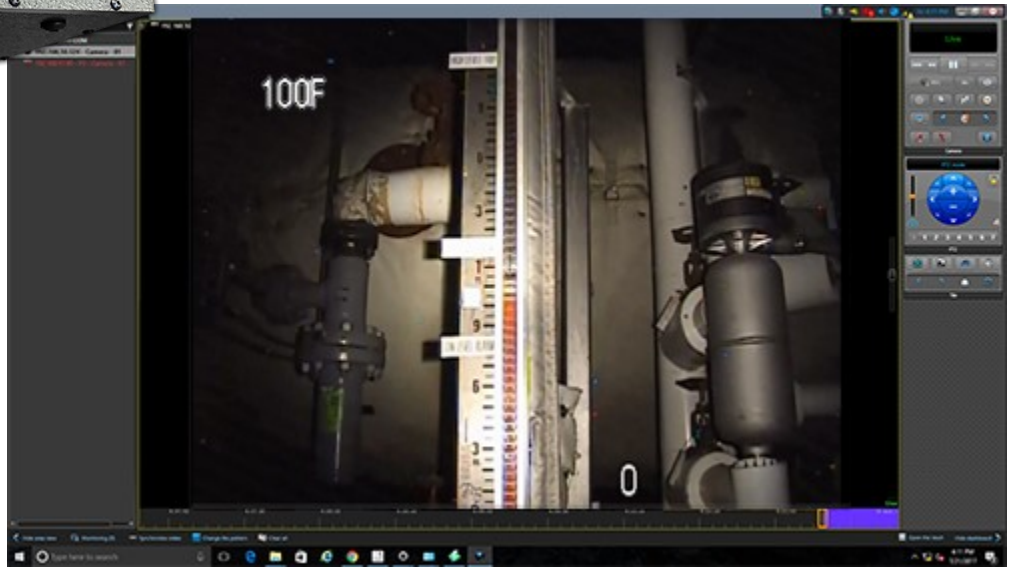


Innovative Industrial Solutions



I.I.S.

P3 Camera



The New I.I.S. **P3** is a Power over Ethernet, Pan/Tilt/Zoom, Pedestal Camera that is Omnicast, Security Center and Milestone compatible and equipped in the same ultra high density polyethylene housing as our custom industrial strength dome housing. The ability to look directly overhead or beneath makes it easy to get the desired view in any environment. The camera's on board temperature sensor gives you an overlaid measurement on the screen.

****Does not require POE Plus or an injector***

****The Rad Tolerance of the P3 Camera has been tested up to 10,000 REM of Gamma Exposure (Cs137).***

Innovative Industrial Solutions, Inc.

2830 Skyline Drive Russellville, AR 72802

Phone (479) 968-4266

Fax (479) 890-9072

www.i-i-s.net

Innovative Industrial Solutions



I.I.S.

P3 Camera

- PoE
- Pan: 355°
- Tilt: 180°
- Zoom: 36x optical and digital to 324x
- Super Bright LED
- Remote power (on/off) control of Camera

Unit Dimensions:

Camera Unit: 3.5" W x 4.5" H x 5.5" D

Pan Unit: 4.5" W x 6.5" H x 5.5" D

Weight: 7 lbs.



Trigger Clamp
(scaffold pole or rail mount)



Magnet Mount

***Comes equipped with a 24" Tether for FME purposes and the I.I.S. Quick Connect Mounting System allows for quick and easy change from a mag mount or trigger clamp in less than 30 seconds without the use of any tools.

Innovative Industrial Solutions, Inc.

2830 Skyline Drive Russellville, AR 72802

Phone (479) 968-4266

Fax (479) 890-9072

www.i-i-s.net

Innovative Industrial Solutions



I.I.S.

P3 Camera

Camera Specifications

Operating temperature	0° C to +60° C (+32° F to +140° F)
Image Sensor	1/4-type Super HAD II CCD
Horizontal resolution	670TVL
Signal System	NTSC
Minimum illumination (50%) Normal Mode	Color: 0.6 lx Typical (F1.6, AGC on, 1/60 s) Color: 0.04 lx Typical (F1.6, AGC on, 1/4 s) ICR-ON: 0.01 lx (F1.6, AGC on, 1/4 s)
Recommended illumination	100 lx to 100,000 lx
S/N ratio	More than 50 dB
Gain	Auto/Manual (-3 step to 28 step, +2 step/total 16 steps) Max Gain Limit (6 step to 28 step, +2 step step / total 12 steps)
Shutter Speed	1/1 s to 1/10,000 s, 22 steps
Exposure Control	Auto Manual, Priority mode (shutter priority & iris priority), Bright, EV compensation, Slow AE
Backlight Compensation	Yes
Aperture Control	16 Steps
White Balance	Auto, Manual, Priority mode (shutter priority & iris priority), Bright, EV compensation, Slow AE
Lens	40x optical zoom, f=3.06mm (wide) to 122.4 mm (tele), F1.6 to F4.6
Digital Zoom	12x (480x with optical zoom)
Focusing System	Auto (sensitivity: normal, low), One-push AF, Manual, Interval AF, Zoom Trigger AF, Focus compensation in ICR on
Minimum object distance	10mm (wide up end) to 1500 (teleend)(default: 320 mm)
Radiation Tolerance	
Dose Rate	Up to 1 x 10 ³ rad/hr
Total Dose	Up to 1 x 10 ⁴ rad

Innovative Industrial Solutions, Inc.

2830 Skyline Drive Russellville, AR 72802

Phone (479) 968-4266

Fax (479) 890-9072

www.i-i-s.net



I.I.S.

P3 Camera

Encoder Specifications

Video

Standards	H.264 MP, H.264 BP + (ISO/IEC 14496-10), M-JPEG, JPEG
Data Rates	9.6 kbps to 6 Mbps
Resolution	Horizontal x vertical PAL/NTSC
4CIF	704 x 576/480 (25/30 ips)
CIF	352 x 288/240 (25/30 ips)
GOP structure	I, IP, IPBB, IBBRBP
Overall IP Delay	240 ms max

Frame Rate 1 to 50/60 (PAL/NTSC)

Network

Ethernet	10/100 Base-T, auto-sensing, half/full duplex, RJ45
Protocols	RTP, Telnet, UDP, TCP, IP, ZHTTP, HTTPS, FTP, DHCP, IGMP V2/V3, ICMP, ARP, SMTP, SNTP, SNMP, RTSP, 802.1x, iSCSI, DYnDNS, UPnP
Encryption	TLS 1.0, SSL, AES (license option)

Control

Software Update	Flash ROM, remote programmable
Configuration	Configuration Manager or Web browser