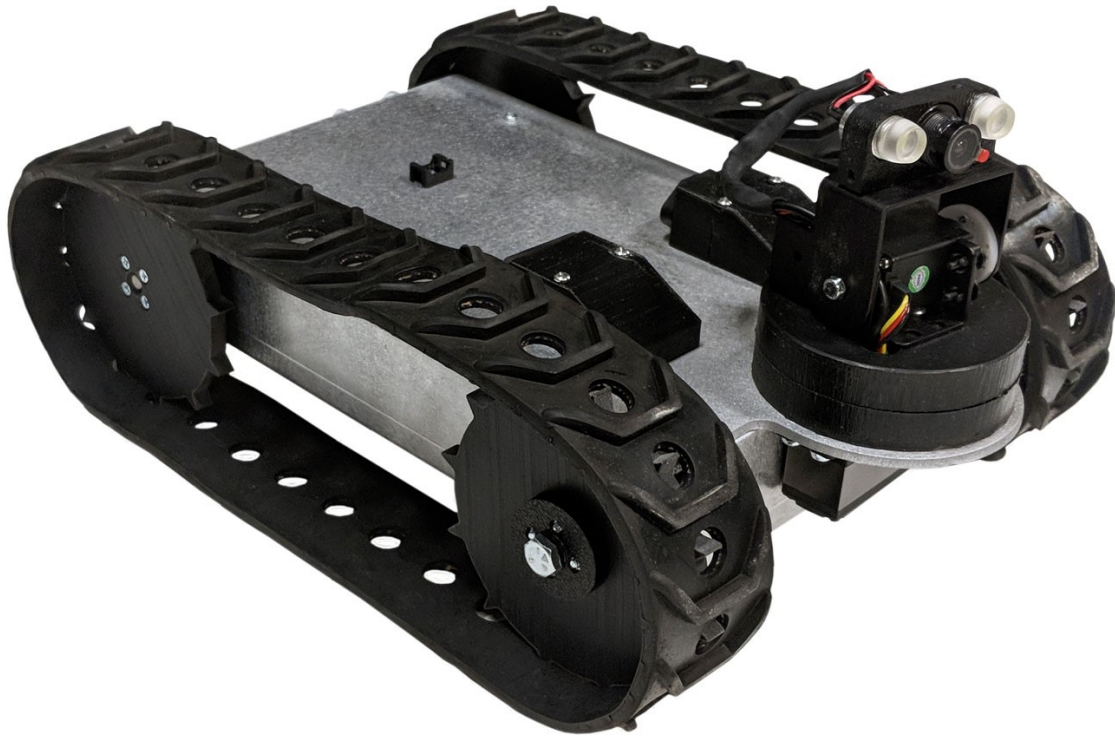




I.I.S.

JR Inspection Robot



The small (9.5" wide x 13.5" long x 7" tall), lightweight (5lbs.), inspection robot comes equipped with a pan and tilt camera, LCD Controller and a 100ft. Tether.

Innovative Industrial Solutions, Inc.

2830 Skyline Drive Russellville, AR 72802

Phone (479) 968-4266

Fax (479) 890-9072

www.i-i-s.net

Innovative Industrial Solutions



I.I.S.

JR Inspection Robot

- Includes chassis, hardware, electronics, etc.
- MLT pair of molded spliceless tracks and wheels set.
- Qty 2: IG32P 24VDC 190 RPM Gear Motor.
- Qty 3: LiPo Battery 11.1V 2200 mAh (2 for drive motors / 1 for controller) Providing up to two hours of operation depending on use.
- Includes battery chargers.
- Custom controller to operate robot and PTZ camera.
- Color 4.3 inch TFT LCD Monitor.
- Pan-and-tilt inspection camera.
- 100ft tether.
- LED lights.
- **Dimensions:** ~9.5" wide x 13.5" long x 7" tall.
- **Capacity:** Handles 8lbs. of additional payload in most terrains.
- **Speed:** Up to 200 fpm.
- **Weight:** ~5 lbs.
- **Assembly:** Fully assembled, tested and ready to go!



Innovative Industrial Solutions, Inc.

2830 Skyline Drive Russellville, AR 72802

Phone (479) 968-4266

Fax (479) 890-9072

www.i-i-s.net