



Axis Q2901-E Thermal Camera

Delivers thermal imaging in 336x256 resolution.

Supports up to six temperature alarm zones.

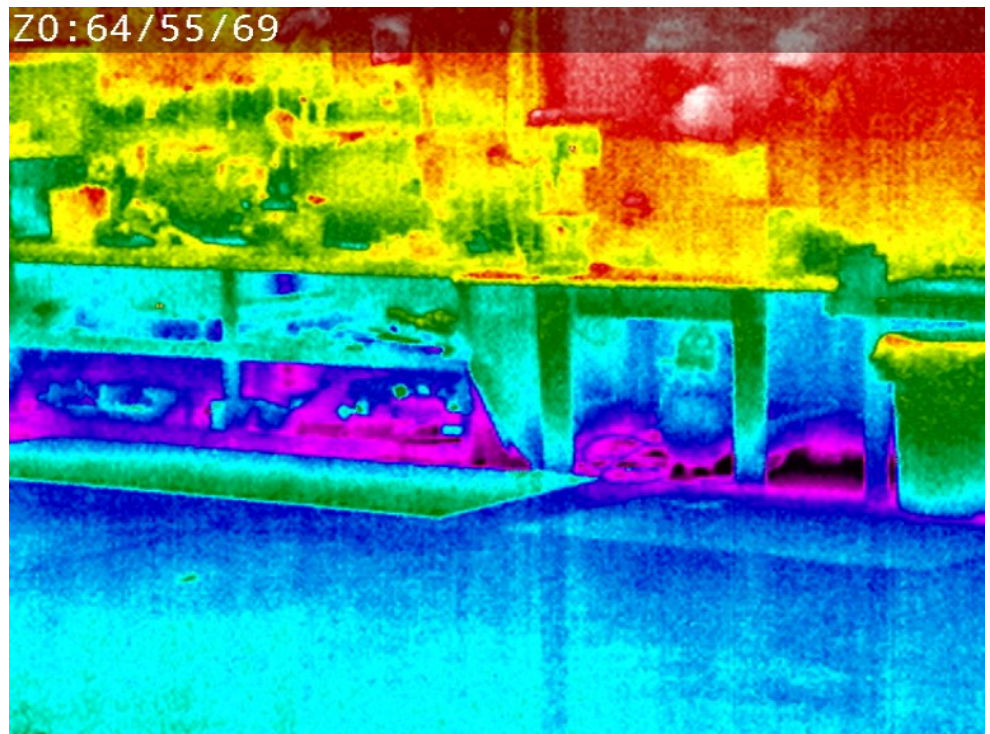
Two kinds of alarms triggered by a deviation of the temperature: if the temperature goes beyond a set limit, or if it increases too rapidly.

Spot temperature functionality to view the temperature of a particular area.

Isothermal palettes highlight temperature-spans in the image, making it easier to visualize hot spots to identify overheated equipment or areas.



- Temperature alarm
- Isothermal palettes
- Spot temperature reading
- High performance intelligent video



AXIS Q2901-E Temperature Alarm Camera

Models	AXIS Q2901-E 9 mm AXIS Q2901-E 19 mm	Built-in installation aids	Pixel counter
Camera		Data streaming	Event data
Image sensor	Uncooled Micro bolometer 336x256 pixels, Pixel size 17 µm, Spectral range: 8-14 µm	General	
Lens	9 mm: F 1.25, horizontal field of view: 35°, min. focus distance: 2.1 m (78.7 in) 19 mm: F 1.25, horizontal field of view: 17° view, min. focus distance: 9.5 m (354.3 in)	Casing	IP66-, IP67- and NEMA 4X-rated metal casing (aluminium) with integrated dehumidifying membrane and a germanium window Color: White NCS S 1002-B. For repainting instructions and impact on warranty, contact your Axis partner
Detection range	The size of a monitored object is recommended to cover at least 10x10 pixels in 336x256.	Memory	256 MB RAM, 128 MB Flash
Sensitivity	NETD < 50 mK	Power	Power over Ethernet IEEE 802.3af/802.3at Type 1 Class 3, max. 10 W, 8-20 V DC, max. 11 W or 20-24 V AC 50-60 Hz, max. 15 VA, Power supply not included
Thermography		Connectors	RJ45 10BASE-T/100BASE-TX PoE, Terminal block for power Eight circuit PCB header for two configurable inputs/outputs and audio
Object temperature range	-40 °C to 550 °C (-40 °F to 1022 °F)	Storage	SD card slot supporting microSD/microSDHC/microSDXC cards (card not included). SD card encryption Support for recording to network-attached storage (NAS). For SD card and NAS recommendations, see www.axis.com
Temperature accuracy	Below 100 °C (212 °F): +/- 5 °C (+/-9 °F) accuracy Below 150 °C (302 °F): +/- 5% accuracy Above 150 °C (302 °F): +/- 20% accuracy	Operating conditions	-40 °C to 60 °C (-40 °F to 140 °F) Humidity 10-100% RH (condensing)
Video		Approvals	Emission and immunity: EN 55022 Class B, EN 50121-4, EN 55024, EN 61000-3-2, EN 61000-3-3, EN 61000-6-1, EN 61000-6-2, FCC part 15 Subpart B Class A, FCC part 15 Subpart B Class B, ICES-003 Class B, VCCI Class B, ITE, C-Tick AS/NZS CISPR22 Class B, KCC KN22 Class B, KN-24 Safety: IEC/EN/UL 60950-1, IEC/EN/UL 60950-22, IS 13252 Environment: EN 50581, IEC 60529 IP66, IEC 60529 IP67, NEMA 250 Type 4X, IEC 60068-2-1, IEC 60068-2-2, IEC 60068-2-6, IEC 60068-2-14, IEC 60068-2-27, IEC 60068-2-30, IEC 60068-2-78
Video compression	H.264 (MPEG-4 Part 10/AVC) Main and Baseline Profile Motion JPEG	Weight	2 kg (4.4 lb)
Resolution	Sensor is 336x256. Image can be scaled up to 720x576	Included accessories	Installation Guide, Windows decoder 1-user license, AVHS Authentication key, AXIS Video Motion Detection 3, AXIS Connector A 2-pin 5.08 Straight Allen key, RJ45 network cable 5 m (16 ft), Wall and Ceiling Mount Bracket
Frame rate	Up to 8.3 fps	Optional accessories	AXIS T8120/T8123-E midspans, Network cable couplers, AXIS T8129 PoE Extender, AXIS T8604 Media Converter, AXIS T8640 Ethernet over Coax Adapter PoE+, AXIS PS24 Mains Adapter, AXIS T8006 PS12 Power Supply, AXIS T8414 Installation Display AXIS T94G01P Conduit Back Box, AXIS T91A47 Pole Mount, AXIS T94P01B Corner Bracket, AXIS T98A17-VE Video Surveillance Cabinet, AXIS Multicable A I/O Audio Power
Video streaming	3 individual streams ^a in H.264 and Motion JPEG: simultaneous, individually configured streams in max. resolution at 8.3 fps Controllable frame rate and bandwidth VBR/MBR H.264	Video management software	AXIS Companion, AXIS Camera Station, Video management software from Axis' Application Development Partners available on www.axis.com/support/downloads
Image settings	Sharpness, Automatic gain control, Exposure zones, Gain, Rotation, Palette, Isothermal palette, Compression, Mirroring, Text and image overlay and Privacy masks Axis Corridor Format	Languages	English, German, French, Spanish, Italian, Russian, Simplified Chinese, Japanese, Korean, Portuguese, Traditional Chinese
Audio		Warranty	Axis 3-year warranty and AXIS Extended Warranty option, see www.axis.com/warranty
Audio streaming	Two-way	Export control	The product contains U.S.-origin controlled technology/component, the US Export Administration Regulations (EAR) are always applicable to the product. You should comply at all times with all applicable national and international (re-)export control regulations.
Audio compression	AAC-LC 8/16 kHz, G.711 PCM 8 kHz, G.726 ADPCM 8 kHz, Configurable bit rate		
Audio input/output	External microphone or line input, line output		
Network			
Security	Password protection, IP address filtering, HTTPS ^b encryption, IEEE 802.1X ^b network access control, Digest authentication, User access log, Centralized certificate management		
Supported protocols	IPv4/v6, HTTP, HTTPS ^b , SSL/TLS ^b , QoS Layer 3 DiffServ, FTP, CIFS/SMB, SMTP, Bonjour, UPnP TM , SNMP v1/v2c/v3(MIB-II), DNS, DynDNS, NTP, RTSP, RTP, TCP, UDP, IGMP, RTCP, ICMP, DHCP, ARP, SOCKS, SSH		
System integration			
Application Programming Interface	Open API for software integration, including VAPIX [®] and AXIS Camera Application Platform; specifications at www.axis.com AXIS Video Hosting System (AVHS) with One-Click Connection ONVIF Profile S and ONVIF Profile G, specification at www.onvif.org		
Analytics	AXIS Video Motion Detection 4, active tampering alarm Support for AXIS Camera Application Platform enabling installation of third-party applications, see www.axis.com/acap		
Event triggers	Analytics, Temperature detection (6 alarm zones), Hardware temperature, Edge storage events, Shock detection, Time scheduled, Motion Detection, Live Stream Accessed Audio Detection		
Event actions	File upload: FTP, SFTP, HTTP, HTTPS network share and email Notification: email, HTTP, HTTPS and TCP Status LED, Text overlay, SNMP, Pre- and post-alarm video buffering, Video recording to edge storage, Network share		

- a. Individual palette cannot be set per video stream
b. This product includes software developed by the OpenSSL Project for use in the OpenSSL Toolkit. (www.openssl.org), and cryptographic software written by Eric Young (eyay@cryptsoft.com).

Environmental responsibility:

axis.com/environmental-responsibility